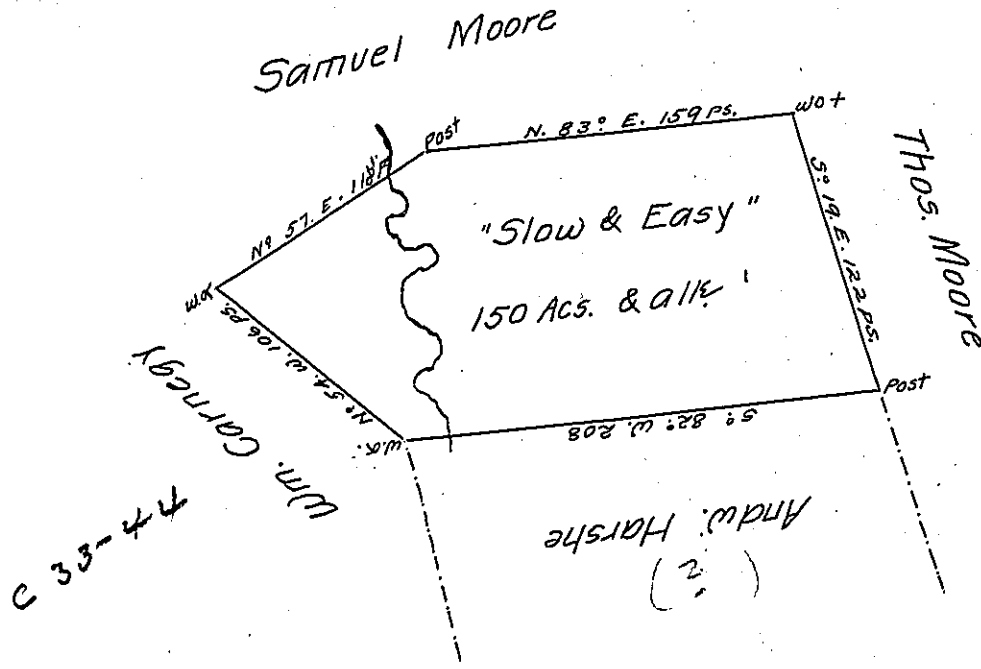


North Line of
Hanover →
BEAVER



C-140-95
(2)

A Draught of a Survey called "Slow & Easy" situate on the
Waters of Raccoon Creek in *Washington County containing 150 acs. and ye
usual allow^{ts} for roads & executed August the 8th. 1787 in Pursuance of a
Warrant granted to Andw. Harshe for 150 Ac. dated August 24th. 1786.

Presley Nevill }
Mattw. Ritchie } Dfns

Note, this Survey which is now in *Allegheny
County, hath been detain'd through the
delay of the owner

A Copy from the Books
of Nevill & Ritchie Dfns
Presley Nevill Dfr

Danl. Brodhead Esq.

IN TESTIMONY that the above is a copy of the original remaining on file in
the Department of Internal Affairs of Pennsylvania, made
conformably to an Act of Assembly approved the 16th day of
February, 1833, I have hereunto set my Hand and caused
the Seal of said Department to be affixed at Harrisburg,
this fifteenth day of April 1905

George A. Brown
Secretary of Internal Affairs.